

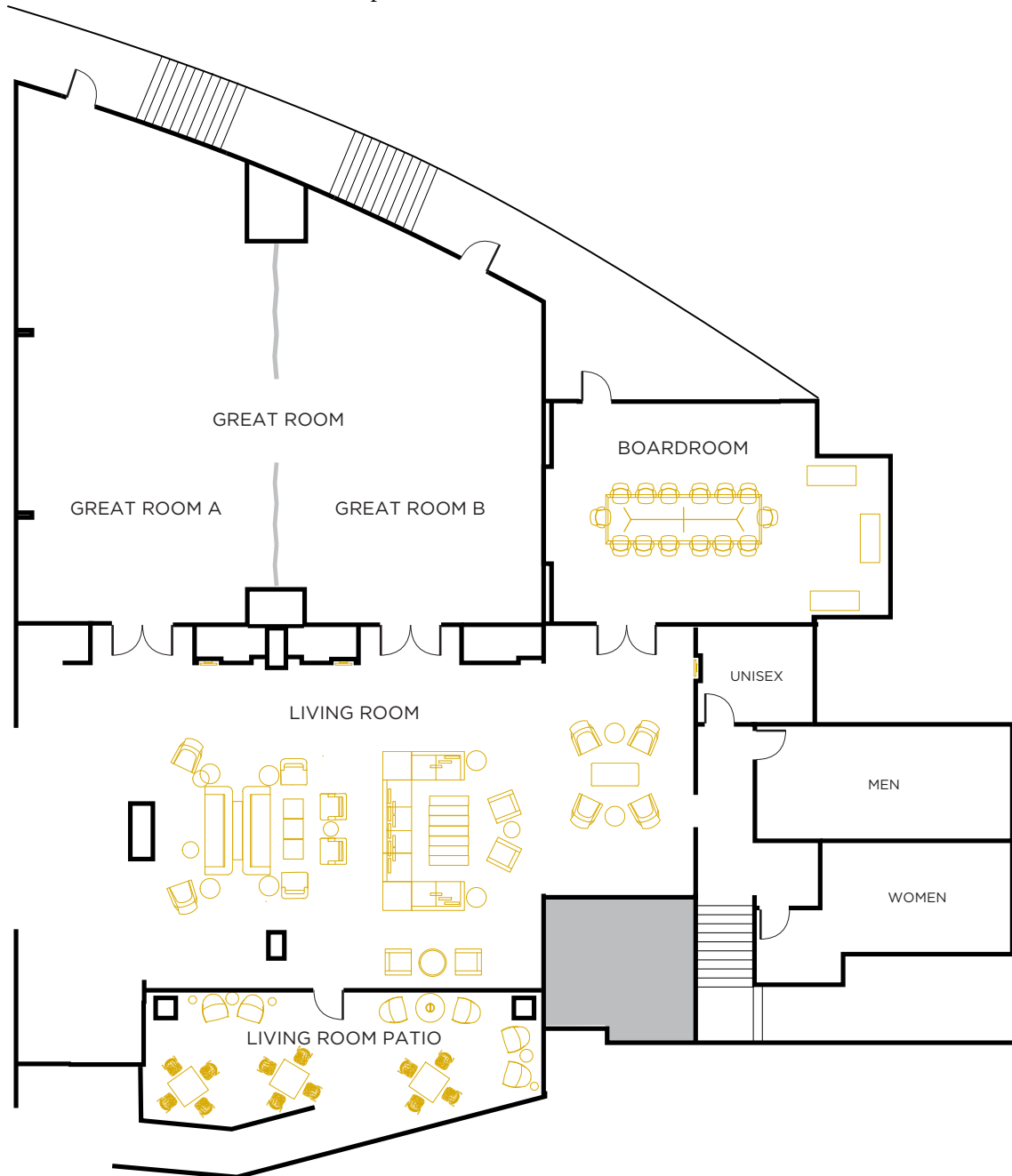


#archerhotel

# FIRST-FLOOR EVENT SPACE

## ARCHER HOTEL TYSONS

Archer's sophisticated first-floor venues are easy to access and navigate.  
Mix and match the private spaces with the living room's casually elegant seating groups  
for optimal fit and function.



**ARCHER**<sup>®</sup>  
HOTEL



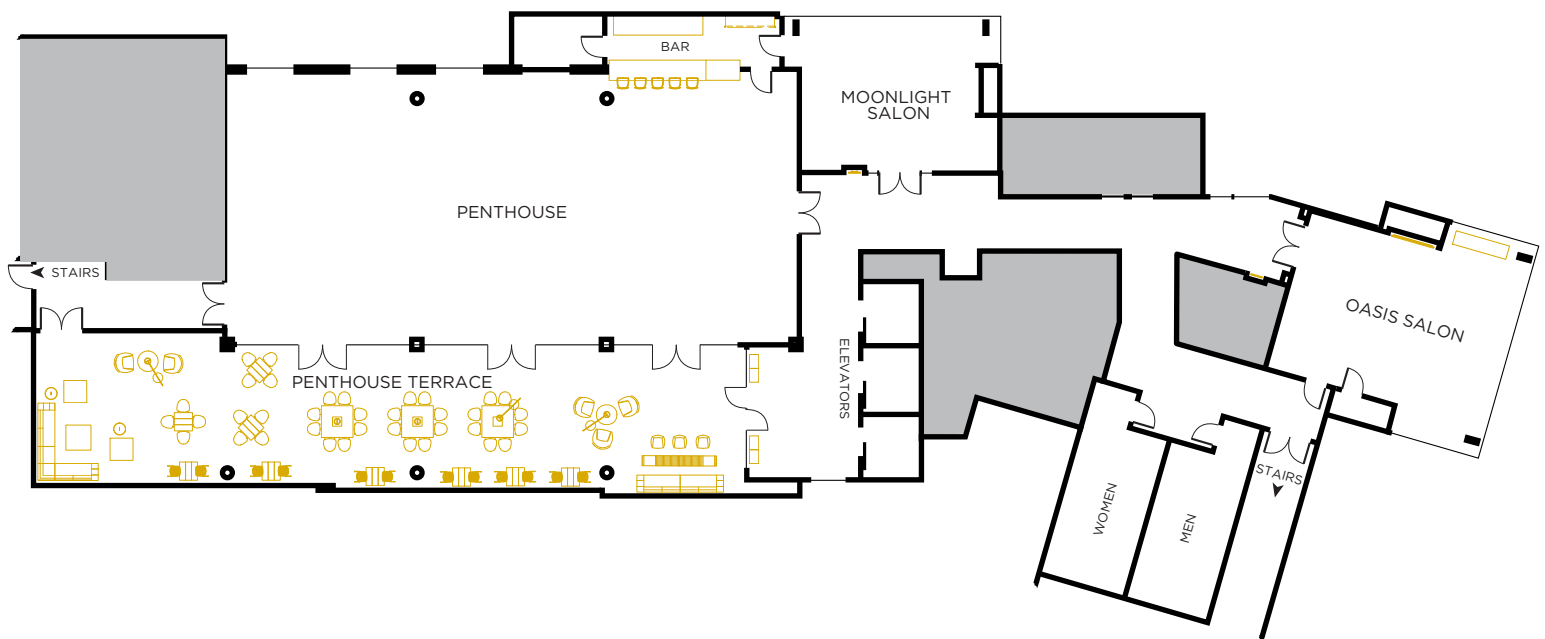
#archerhotel

# SEVENTH-FLOOR EVENT SPACE

## ARCHER HOTEL TYSONS

The light-filled contemporary event spaces atop Archer Hotel Tysons are perfectly suited for posh receptions, milestone celebrations, business meetings and everything in between.

Add the alfresco Penthouse Terrace for extra function and flair.



**ARCHER**<sup>®</sup>  
HOTEL

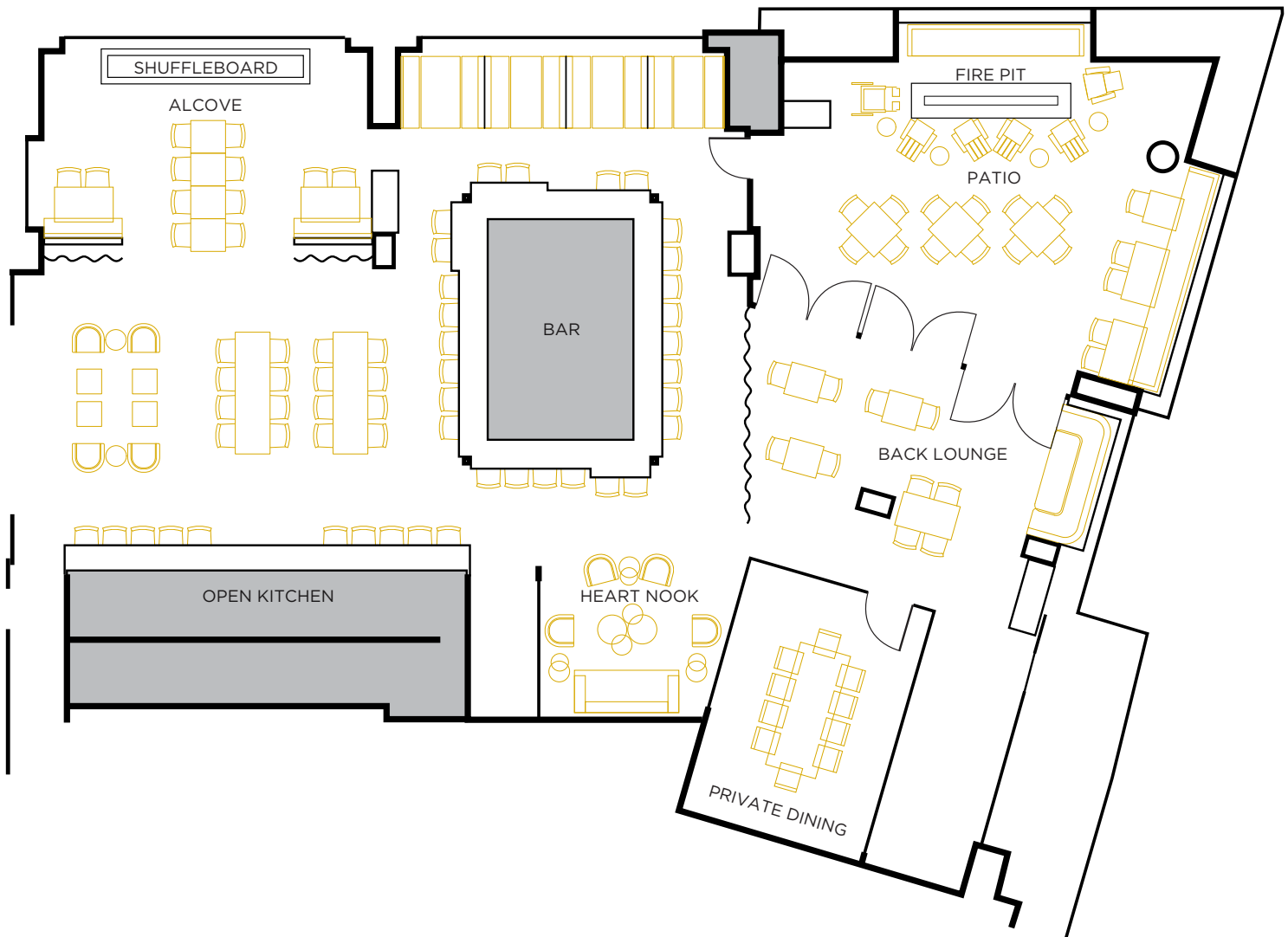


# AKB EVENT SPACE

## ARCHER HOTEL TYSONS

#archerhotel

Archer's classic hotel bar is a lively, welcoming gathering place with a central 360° bar, a private dining room, artful semiprivate spaces and an alfresco patio.



**ARCHER**<sup>®</sup>  
HOTEL



#archerhotel

# EVENT SPACE CAPACITIES

## ARCHER HOTEL TYSONS



### FIRST-FLOOR + SEVENTH-FLOOR

Total: 14,110 sq. ft.  
Indoor: 11,645  
Outdoor: 2,465

### PENTHOUSE

3,025 sq. ft.  
80' x 35'  
Banquet: 128  
Classroom: 100  
Crescent: 80  
Hollow Square: 48  
Reception: 150  
Theater: 180  
U-shape: 40

### PENTHOUSE TERRACE

2,110 sq. ft.  
102' x 21'  
Banquet: 96  
Crescent: 60  
Reception: 80

### BOARDROOM

730 sq. ft.  
Seats: 14

### GREAT ROOM

(Great Rooms A, B)  
2,430 sq. ft.  
Banquet: 112  
Classroom: 60  
Crescent: 70  
Hollow Square: 44  
Reception: 125  
Theater: 120  
U-shape: 40

### GREAT ROOM A

1,365 sq. ft.  
Banquet: 64  
Classroom: 32  
Crescent: 40  
Hollow Square: 24  
Reception: 65  
Theater: 65  
U-shape: 20

### GREAT ROOM B

1,065 sq. ft.  
Banquet: 56  
Classroom: 24  
Crescent: 35  
Hollow Square: 24  
Reception: 50  
Theater: 50  
U-shape: 20

### LIVING ROOM

3,980 sq. ft.  
Seats: 70

### LIVING ROOM PATIO

355 sq. ft.  
Reception: 12 - 18

### MOONLIGHT SALON

615 sq. ft.  
28' x 22'  
Banquet: 40  
Classroom: 16  
Crescent: 25  
Hollow Square: 16  
Reception: 30  
Theater: 40  
U-shape: 12

### OASIS SALON

865 sq. ft.  
32' x 27'  
Banquet: 56  
Classroom: 24  
Crescent: 30  
Hollow Square: 24  
Reception: 50  
Theater: 50  
U-shape: 18

### AKB

Total: 4,018 sq. ft.  
Indoor: 3,007  
Outdoor: 1,011

### PRIVATE DINING

300 sq. ft.  
Seats: 10

### ALCOVE

435 sq. ft.  
Reception: 20 - 25  
Seats: 16

### PATIO

1,011 sq. ft.  
Reception: 30  
Seats: 22

### BACK LOUNGE

515 sq. ft.  
Reception: 20  
Seats: 16

### HEART NOOK

175 sq. ft.  
Seats: 7

**ARCHER**  
HOTEL

*Based on maximum capacity; addition of audiovisual equipment could affect capacity.*